

TEKNİK ÇİZİM KATALOĐU



SYSTEM KARASU

Profesyonel Çözüm Ortađımız

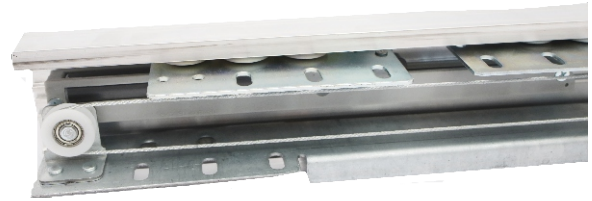
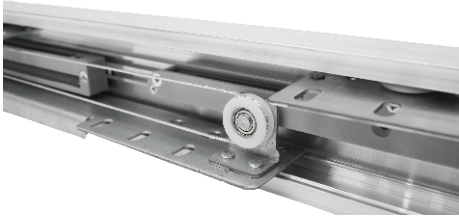
SNKRNZ 12

BİLGİ/INFORMATION

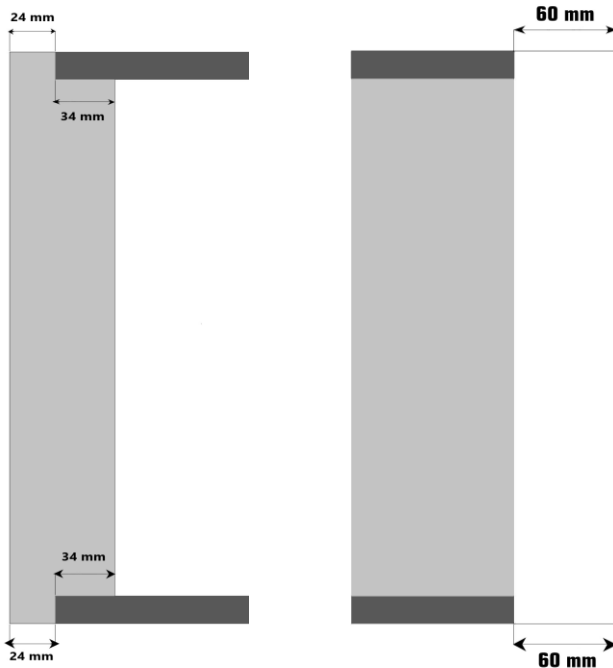
- Tüm kapakları senkronize olarak çalışan sürgülü gardrop sistemleridir.
- Yarı yüzden basan sistemlerdir.
- Kapakların yerinden çıkmasını engelleyen kilit sistemi bulunmaktadır.
- Her kapak için taşıma kapasitesi 90 kg'dır.
- 4 kapaklı senkronize sisteminde 2 iç kapak - 1 dış kapak ve ya 2 dış kapak - 1 iç kapak şeklinde uygulama yapılabilir.
- Senkronize kapaklar ile kullanım kolaylığı sağlamaktadır.

- *These are sliding wardrobe systems that all of its doors work synchronously.*
- *These are the systems that press half a face (roller systems).*
- *There is a lock system that prevents the doors from coming off.*
- *Carrying capacity for each door is 90 kg.*
- *In the 3-door synchronous system, 2 inner doors - 1 outer doors or 1 inner doors-2 outer doors can be applied.*
- *It provides ease of use with synchronized covers.*

ÜST RAY TAKIMI / TOP RAIL KIT



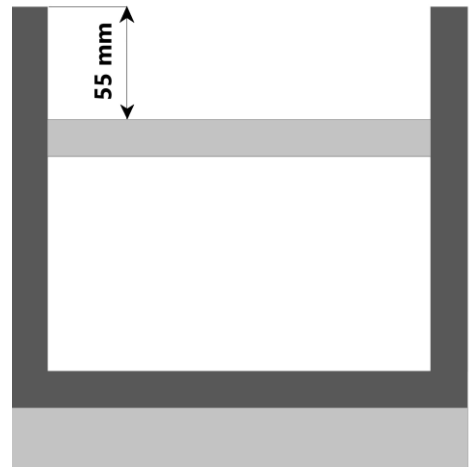
ÜST GÖRÜNÜM / TOP VIEW

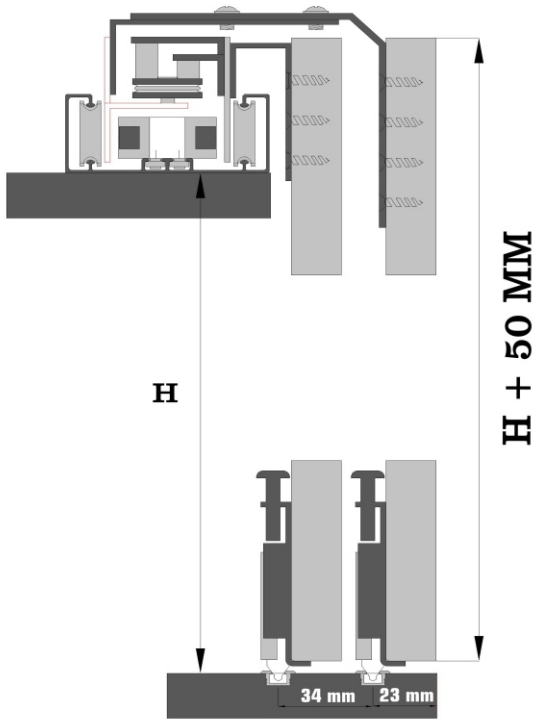


3 Kapak İç / Inner Doors

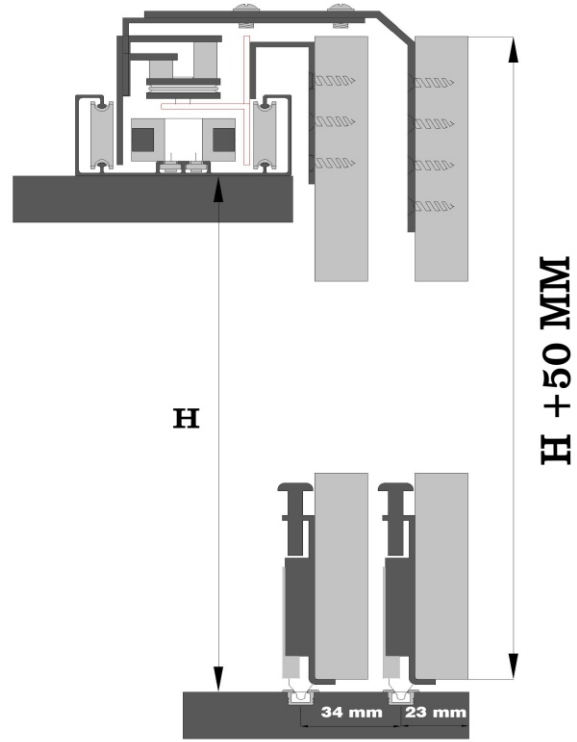
3 Kapak Dış / Outer Doors

ÖN GÖRÜNÜM / FRONT VIEW



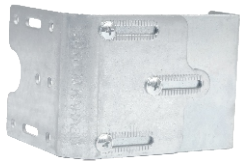


3 Kapak Dış / Outer Doors



3 Kapak İç / Inner Doors

DIŞ KAPAK MEKANİZMA / OUTER DOOR MECHANISM



SYS 5002

İÇ KAPAK MEKANİZMA / INNER DOOR MECHANISM

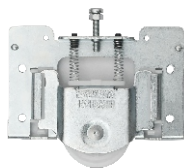


SYS 5010

ALT MAKARALAR / BOTTOM REELS

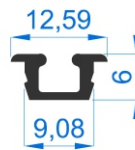


SYS 1040

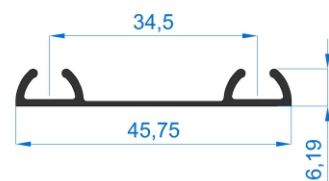


SYS 1050

ALT RAYLAR/ BOTTOM RAILS



ALT RAY 0050



ALT RAY 0090